

# HTYA615H

FULLY INSULATED PASSTHROUGH DISHWASHER WITH **SHR - STEAM HEAT RECOVERY**

9.7KW THREE PHASE (7.0 KW SINGLE PHASE OPTIONAL)

Special line **500/600x500mm basket**



## GUARANTEED WASH PERFORMANCE

In commercial dishwashers, the rinse is the most important part of the wash cycle, as it is the only one performed with clean water. This is the reason why, at Smeg, we believe all commercial dishwashers must have **a rinse pump on board**, the only way to guarantee that optimal and constant pressure and temperature are maintained throughout the rinse cycle.

## WE BELIEVE IN OUR QUALITY

All dishwashers are manufactured in our state of the art factory in Italy, where we monitor all phases of design, engineering and production.

## PRODUCT FEATURES

- **Double skin, fully insulated hood and panels**
- Construction in AISI 304 stainless steel
- Small capacity tank (25lt), moulded and with rounded edges
- Hood opening height: 420mm
- **Capacity to wash 600x500mm baskets and 600x400 trays**
- 20% higher load capacity compared to standard pass-through dishwashers
- **SHR (Steam Heat Recovery) device**
- **HTR (High Temperature Rinse) system with atmospheric boiler and rinse pump**
- 2.7 litres water rinse cycle
- Drain pump
- Triple stage dynamic filtration system to separate dirt particles from wash water and to control tank level
- **Water connection: Cold**
- Upper and lower wash and rinse arms in AISI 304 stainless steel
- Full size tank filter with removable basket, all in AISI 304 stainless steel
- Electronic control with 6 wash programs
- Shortest wash program 60 seconds
- Automatic "stand-by" to reduce energy consumption when not washing
- Automatic start on hood closure
- Soft start wash pump
- Automatic self-cleaning cycle and shut-off at the end of drain cycle
- Thermostop system to ensure correct rinse temperature
- Adjustable peristaltic pumps for detergent and rinse-aid injection
- Self-diagnostic system with error messages
- **Power connection: three phase (standard) or single phase (optional)**
- **24 months parts and labour warranty**
- **Note: cold water connection required**

## INCLUDED ACCESSORIES

- Dish basket: 1 x PB60D01 (600x500x115mm)
- Cutlery basket: 1 x PHOOS03
- Flat basket: 1 x PB60G01 (600x500x115mm)

# HTYA615H

FULLY INSULATED PASSTHROUGH DISHWASHER WITH **SHR - STEAM HEAT RECOVERY**

9.7KW THREE PHASE (7.0 KW SINGLE PHASE OPTIONAL)

Special line **500/600x500mm basket**

## TECHNICAL SPECIFICATIONS

**Dimensions (mm) (WxDxH)**

716x836x1520/2040

Note

Installation details and footprint remain the same as all previous corresponding CWC models

Basket (mm)

600x500 or 500x500

Shortest wash program

60 sec

Tank capacity (litres)

25

Boiler heating element (kW)

6.0 - 9.0

Power rating & electrical connection

**Standard**

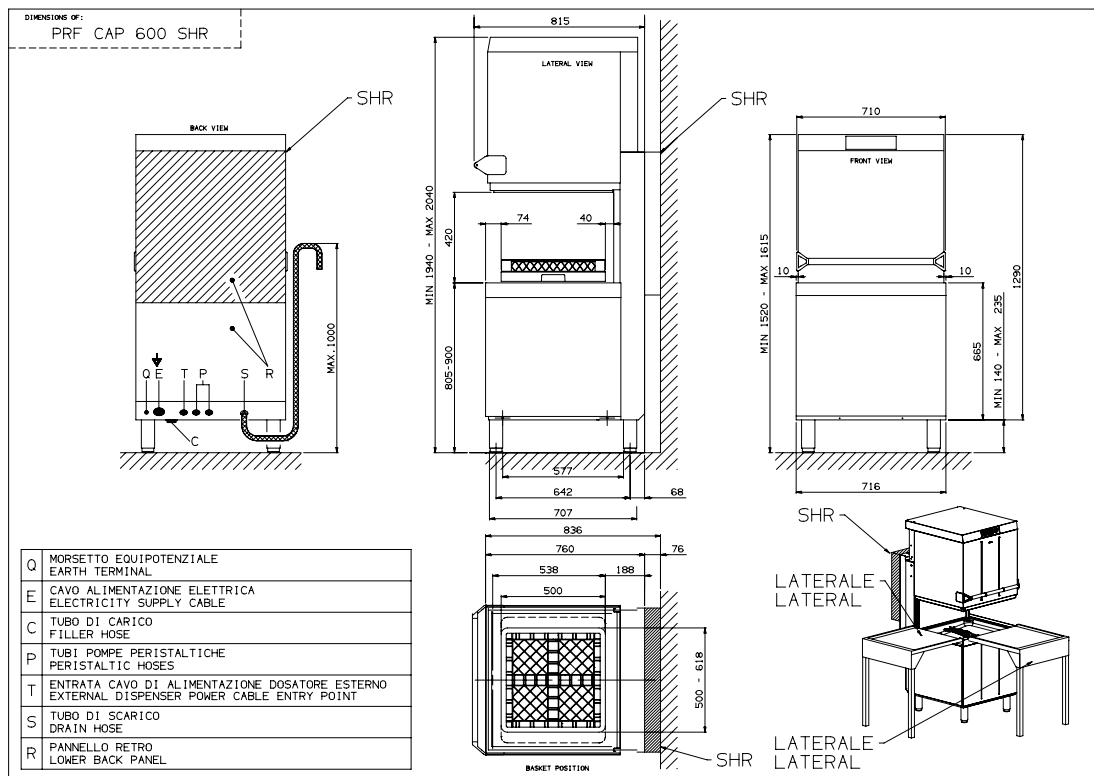
400V 3N~ / 16A / 9,7kW / 50Hz

**Optional**

230V~ / 31A / 7,0kW / 50Hz

Net weight

145Kg



\* Indicative wash times

\*Cold water connection required and three-phase electrical connection whenever possible



UNI EN ISO 9001  
9130-Smeg

UNI EN ISO 14001  
9191-SME2

DHSAS 18001  
9192-SME3